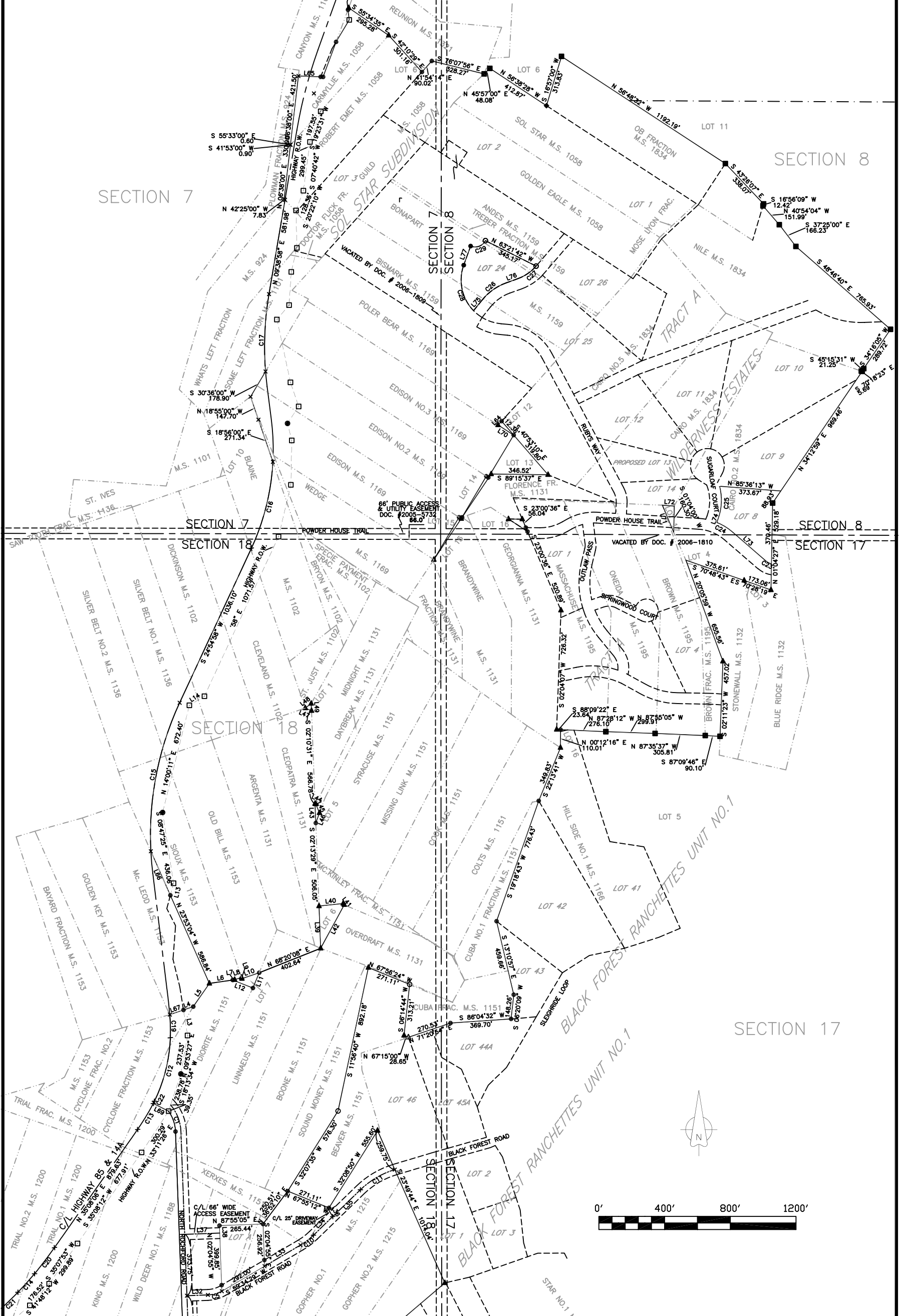


TRACT OF LAND  
 LOCATED IN PORTIONS OF WHATS LEFT FRACTION LODE M.S. 924, SOME LEFT FRACTION LODE M.S. 1101, DICKINSON, CLEVELAND & BLAINE LODES M.S. 1102, FLORENCE FRACTION LODE M.S. 1131, SILVER BELT NO.1 LODE M.S. 1136, CLIENT LODE M.S. 1142, DIORITE LODE M.S. 1151, CYCLONE FRACTION & SIOUX LODES M.S. 1153, WILD DEER NO.2 & WILD FAWN LODES M.S. 1188, TRIAL FRACTION, TRIAL NO.1, TRIAL NO.2, & CARTER LODES M.S. 1200, ALL OF LOTS 1, 2 & 3 OF THE SOL STAR SUBDIVISION OF THE SUBDIVISION OF THE GOLDEN EAGLE, GOLDEN EAGLE, MOSE LYON FRACTION AND SOL STAR LODES M.S. 1058; THE REMAINING PORTION OF THE UNPLATTED PORTION OF GOLDEN EAGLE LODE M.S. 1058 AND ALL OF DOCTOR FLICK FRACTION, CARMYLIE, ROBERT EMET LODES M.S. 1058, ST. JUST, BRYON & SPECIE PAYMENT FRACTIONS LODES M.S. 1102, DAYBREAK, CLEOPATRA, ARGENTA, OVERDRAFT, MIDNIGHT, BRANDYWINE, BRANDYWINE FRACTION & GEORGIANNA LODES M.S. 1131, BRIDGEPORT, DR. LATE, FLORENCE, CAW, MCLEOD, MCLEOD NO.1, MCLEOD NO.2, STEAD, STEAD NO.1, STEAD NO.2, STEAD NO.3, STEAD NO.4, WEST VIRGINIA, LAMPLIGHTER, BLUE DANUBE, I.M.H., GERTRUDE, COPPY FRACTION, LOW, HIGH, POORMAN, ELSIE, MONMOUTH, MONMOUTH NO.1, MONMOUTH NO.2, MONMOUTH NO.3, MONMOUTH NO.4, MONMOUTH NO.5, MONMOUTH NO.6, DECEMBER & CLIENT FRACTIONS LODES M.S. 1142, SYRACUSE, MISSING LINK, COOK, COLTS, CUBA FRACTION, CUBA NO.1 FRACTION, MC KINLEY FRACTION, LINNAEUS, BOONE, SOUND MONEY & XERXES LODES M.S. 1151, OLD BILL M.S. 1153, POLER BEAR, WEDGE & EDISON, EDISON NO.2, EDISON NO.3, LODES M.S. 1169, WILD DEER NO.1 LODE M.S. 1188, CARTER NO.1, RAY, RAY NO.1, RAY NO.2, RAY NO.3, OX, FLAT, RAINBOW, ALBERT STEELE, BROWNING, PARAGON, CHARLIE, RUBY BASIN, CUNIFF, STAR, PRINCIPAL FRACTION, PRINCIPAL FRACTION NO.1, PRINCIPAL NO.1, PRINCIPAL NO.2, PRINCIPAL NO.3, PRINCIPAL NO.4, SHERIDAN, ANNIE, MAGGIE, AMY, WAUKEGON, GENEVIEVE, LITTLE JOHNNY, LLAMA, TUMTUM, KING & LUCKY GIRL LODES M.S. 1200, B & M FRACTION, DEPOSIT, BENGAL TIGER, LONE STAR, LEONA LOCK, GOPHER NO.1, GOPHER NO.2 & GOPHER NO.3 LODES M.S. 1215, LOT 7 IN SECTION 24, T4N R2E AND LOTS 2, 8, 9, 11, 12 & 13 IN SECTION 19, T4N R3E, ALL SITUATED IN SECTION 24, T4N, R2E AND SECTIONS 7, 8, 18, 19 & 20, T4N, R3E, B.H.M., LAWRENCE COUNTY, SOUTH DAKOTA

REMAINDER OF TRACT A OF WILDERNESS ESTATES  
 CONSISTING OF THE NILE, CAIRO, CAIRO NO.2, CAIRO NO.5 & O.B. FRACTION LODES M.S. 1834, MASSACHUSETTS, ONEIDA, BROWN & BROWN FRACTION LODES M.S. 1195, ANDES, TREBER FRACTION, BONAPART & BISMARK LODES, M.S. 1159, ALL LOCATED IN THE SE¼ OF SECTION 7, W½ OF SECTION 8, NW¼ OF SECTION 17, T4N, R3E, B.H.M., LAWRENCE COUNTY, SOUTH DAKOTA

LOTS 1, 4, 9, 10, 11, 12, 14, 25 & 26 OF WILDERNESS ESTATES  
 BEING A SUBDIVISION OF TRACT A, CONSISTING OF THE NILE, CAIRO, CAIRO NO.2, CAIRO NO.5 & O.B. FRACTION LODES M.S. 1834, MASSACHUSETTS, ONEIDA, BROWN & BROWN FRACTION LODES M.S. 1195, ANDES, TREBER FRACTION, BONAPART & BISMARK LODES, M.S. 1159, ALL LOCATED IN THE SE¼ OF SECTION 7, W½ OF SECTION 8, NW¼ OF SECTION 17, T4N, R3E, B.H.M., LAWRENCE COUNTY, SOUTH DAKOTA



Prepared By:  
**PONDEROSA LAND SURVEYS, L.L.C.**  
 332A WEST MAIN ST.  
 LEAD, SD 57754  
 (605) 722-3840

Date:	9/6/2010
Drawn By:	L. D. Vrem
Project No.:	10-74
Dwg. No.:	10-74PUD.dwg